



Corbett Drive, Lightwater

£400,000



Corbett Drive, Lightwater, Surrey

Three bedroom Charles Church built freehold house with conservatory and a garage in a cul-de-sac position in Lightwater.

FEATURES

- Access to nearby Lightwater Country Park
- Easy access to junction 3 of the M3
- Gas central heating
- Residents parking
- Fitted wardrobes

ACCOMMODATION

- Entrance hall
- Downstairs cloakroom
- Sitting/dining room
- Conservatory
- Kitchen
- Stairs and landing
- Three bedrooms
- Upstairs bathroom

OUTSIDE

- Residents parking
- Garage in block
- Rear garden

EPC RATING

D

COUNCIL TAX

Surrey Heath Band D





Corbett Drive

Approximate Gross Internal Area = 80.6 sq m / 867 sq ft
Garage = 14.3 sq m / 154 sq ft
Total = 94.9 sq m / 1021 sq ft

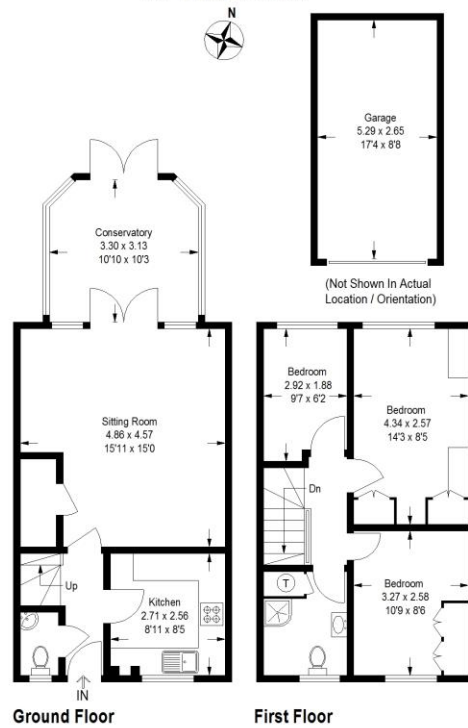


Illustration for identification purposes only, measurements are approximate, not to scale. (ID712669)

Disclaimer: We wish to inform prospective purchasers that we have prepared these sales particulars as a general guide. We have not carried out a detailed survey, nor tested the services, appliances and specific fittings. Room sizes are approximate and rounded; they are taken between internal wall surfaces and therefore include cupboards / shelves, etc. Accordingly, they should not be relied upon for carpeting, curtains / blinds and kitchen equipment, whether fitted or not, are deemed removable by the vendor unless specifically itemized within these.

Postcode for sat nav: **GU18 5LA**



NEWTON ROWE
SALES & LETTINGS

The Old Dairy, 7 Updown Hill, Windlesham, Surrey GU20 6AF
enquiries@newtonrowe.co.uk | 01276 986900